



# Newsletter

Issue 4 | November 2021



## MAYORS REPORT

Who would have thought a snap '3 day lockdown' in Tasmania!

Thankfully, due to everyone's willingness to comply with the restrictions and the control measures that were put in place, an extension to this lockdown period was avoided.

It follows that the threat of COVID-19 is real, and the best way to protect yourself, your family, and the community against COVID-19 is to get vaccinated. Anyone aged 12 and over can get vaccinated at a GP, pharmacy, or state-run community clinics.

You don't need a booking to get vaccinated at a state-run community clinic. You can walk-in and get vaccinated without an appointment, but bookings are encouraged so you don't have to wait. Book an appointment by visiting

[www.coronavirus.tas.gov.au/booking](http://www.coronavirus.tas.gov.au/booking) or call the Public Health Hotline on 1800 671 738. Book an appointment at a local GP or pharmacy by contacting them directly.

In relation to vaccination levels, whilst I recognise that in recent weeks the percentage of persons vaccinated in the Southern Midlands has increased substantially, we are still below the State average. In this regard, Council continues to make representations to the State for additional opportunities to enable residents to receive their vaccination locally. I encourage all to make every endeavour to get vaccinated.

On a different subject, Council is fully aware that following the recent rains, a number of Council roads have deteriorated. I can provide assurance that a maintenance program has been developed with the intent of undertaking the necessary maintenance at the earliest opportunity. Whilst the rain is certainly welcome, it does come with a downside.

Along with this rain comes significant growth in vegetation. It is timely to remind all residents of the need to take action to remove fire hazards in the lead up to the fire season.

Finally, this is the last Council newsletter for the calendar year. I therefore take this opportunity (albeit a little bit early) to wish everyone a merry Christmas and safe New Year.

Clr Alex Green  
MAYOR

## Tasmanian Climate Change Office Department of Premier and Cabinet Electric Vehicle Fast Charging Grants

The Tasmanian Government in its support of electric vehicle uptake is providing Grants of up to \$50,000 for eligible organisations towards the upfront cost of purchasing and installing a Direct Current (DC) electric vehicle charging stations in Tasmania, for use by the public.

As part of the development of the Oatlands Aquatic Centre, Council made provision in the planning of the site to enable Electric Vehicle destination charging to be installed at a future date. The availability of this grant program, combined with a partnership with Electric Highway Tasmania Pty Ltd enables Council to offer this charging capability shortly after opening, to a much higher standard than otherwise would be affordable, if we are successful with the grant application.

The proposed charger will be capable of charging two cars simultaneously with up to 100 kW total capacity shared between the two vehicles. This offers a faster charging rate than typical 50kW sites for those cars that can use this level of power, and provides assurance for those coming off the Midland Highway to charge, that we can meet their needs. Looking forward to hearing if we are successful with this Grant Application.

Require further information contact Andrew Benson  
[abenson@southernmidlands.tas.gov.au](mailto:abenson@southernmidlands.tas.gov.au)

## FIRE HAZARDS

Owners & occupiers of properties in the Southern Midlands Municipality are reminded with the fire season fast approaching **it is now time to assess your property and clear any potential fire hazards.**

Inspections of properties are underway, and where considered necessary, Fire Abatement Notices will be issued for the clearing of the fire hazards in accordance with the *Local Government 1993*.

Failure to comply with a Fire Hazard Abatement Notice may result in council undertaking the work at the property owner's expense and fines may apply. Council seeks the co-operation of residents in ensuring that their property does not constitute a fire risk during the coming months.

## Property & Rates

Would you like to receive your property & rates notice by email?



Simply email us your name and property details to: [mail@southernmidlands.tas.gov.au](mailto:mail@southernmidlands.tas.gov.au)

## Seniors week 2021

Seniors Week in the Southern Midlands was celebrated with two events;—with groups enjoying a BBQ lunch and a wander through Chauncy Vale Wildlife Sanctuary; and a Historic Garden tour and lunch at Brickendon. As these were so successful, we have added an additional event on Sunday 21<sup>st</sup> November for the Festival of Roses at Woolmers Estate in Longford. Please call 6254 5050 or email [ccd@southernmidlands.tas.gov.au](mailto:ccd@southernmidlands.tas.gov.au) for bookings. Transport is provided and the cost is \$15 + BYO lunch.



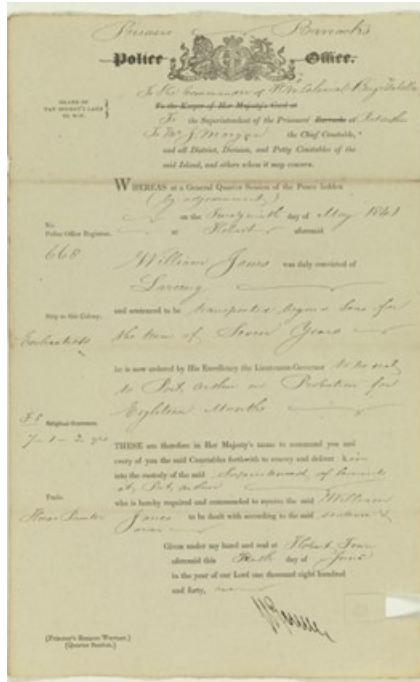
## Historic Oatlands – True Crimes

Following the success of the weekly radio series in a collaboration between local radio station MID FM & Council staff, we will be exploring the murky criminal underground of Oatlands in the 19<sup>th</sup> century through stories about the dodgy ancestors that we will post to the SMC web site. Amongst our cast of criminals we have murderers, thieves, prisoners, forgers, and of course, serial drunkards. We'll start first with the very first person to be gaoled by a Supreme Court Judge at Oatlands and it's an interesting tale...

And having properly warmed up, the following story will introduce you to a blood drinking convict from the Oatlands Court House.

Find the first tale at

[True Crimes Oatlands David Barnes.pdf \(southernmidlands.tas.gov.au\)](#) or listen in to MID FM on Thursdays at 12.30pm to listen to the stories.



## School Holiday Program



During September/October school holiday period, Council's Youth School Holiday program conducted two activities; - one to QVMAG & Riverbend Park in Launceston; and the second activity the children went to Bonorong Wildlife Park & Richmond. 57 lucky children came along. We advertise through all of the Southern Midlands Schools & Council web site & social media. They happen each school holiday period and are FREE.

Enquires [ccd@southernmidlands.tas.gov.au](mailto:ccd@southernmidlands.tas.gov.au) or follow us on Councils Facebook page or web site for the next holiday program or events coming up. The holiday program is distributed to all schools in Southern Midlands.

## Taking care of your dog

It is your responsibility to ensure that your dog is properly cared for. This includes the following guidelines:

- Making sure that your dog doesn't roam during the day or night.
- When you take your dog for a walk it must be kept under effective control and on a lead of no longer than two metres in built up areas.
- Dog must be in sight of their owner at all times and responsive to a command.
- You must always clean up your dog's poo.

## **Drowning happens quickly and silently!!!** **Staying Safe and Installing pool safety barriers saves lives!**

### Owners

#### Do you need to install a pool barrier?

Does your swimming pool or spa hold a depth of water of 300mm (30cm) or more?

Was it installed from 1994 onwards?

If you answer yes to either of these questions you must install a pool safety barrier around your pool.

A pool or spa/hot-tub cover is not a compliant barrier

The requirements to install pool safety barriers applies to:

- Pools which are
  - \* In-ground
  - \* Indoor (excluding bathroom spa-baths)
  - \* Above ground
  - \* Inflatable and relocatable
- Wading pools holding 300mm (30cm) of water
- Hot tubs/spas

### Who can install pool safety barriers?

In Tasmania installation of pool safety barriers must be:

- Performed by a licenced builder and
- Overseen by a licenced building surveyor

### Barrier requirements don't apply to

- Pools and spas (including inflatable) which hold less than 300mm (30cm) of water
- Indoor spa-baths (bathroom spas which are emptied after each use)
- Domestic baths emptied after each use
- Bird Baths
- Fountains
- Water supply and storage tanks
- Fish ponds
- Dams

### Inflatable and relocatable pools

Inflatable and relocatable pools capable of holding a depth of water 300mm (30cm) or more are required to be enclosed by an approved barrier. An owner may install the pool only **after** a safety barrier is installed and certified by a licensed BS .

### Maintenance of barriers

Maintaining a pool; safety barrier is the owners'

responsibility. Owners should check:

- Gates are self-closing correctly and are not propped open
- Latches on gates work correctly
- Items/furniture are not placed against the barrier to enable climbing (including on neighboring property)
- Landscaping does not facilitate climbing
- Openings in the barrier have not increased due to movement of the ground barrier
- The barrier remains structurally sound

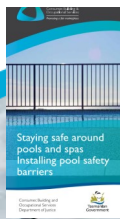
If you are unsure if your pool safety barrier is compliant contact a building surveyor.

### What about pools older than 1994?

It is recommended that owners of pools built before 1994 install and maintain a pool safety barrier to protect themselves and the community.

### Pool and spa owner responsibilities

You, as the pool or spa owner, are responsible for maintaining the pool barrier to prevent access to the pool or spa.



Further details [https://www.cbos.tas.gov.au/\\_data/assets/pdf\\_file/0006/454938/Staying-safe-around-pools-and-spas-Installing-pool-safety-barriers.pdf](https://www.cbos.tas.gov.au/_data/assets/pdf_file/0006/454938/Staying-safe-around-pools-and-spas-Installing-pool-safety-barriers.pdf)

## Southern Midlands Community Small Grants Program 2021

Congratulations to the following organisations that were successful in the recent grants program. A rigorous and transparent assessment was undertaken with the available funds being allocated in priority order.

Brighton Equestrian Club, for Remediation of Arena - \$3,000	Central Hawks Junior Football Club, for Replacing existing Carpet in Clubrooms - \$3,000
Oatlands Ex Services & Community Club, for Gas Hot Water Upgrade - \$3,000	Mount Pleasant Football Club, for New Fridge for Clubrooms - \$2,500
Brighton & Green Ponds RSL Sub Branch, for Floor Sanding and Finishing - \$2,950	Oatlands Rural Youth, for New Seating for the Clubrooms - \$3,000
Oatlands Community Assn Inc, for Kitchen Refurbishment at the MMCC - \$3,000	Campania Volunteer Fire Brigade, for a Ride on Mower - \$3,000
Campania Football Club, for Electrical Sub Board at Club Rooms - \$3,000	Green Ponds Progress Assn, for COVID-19 Supplies to Support Organisations in SM - \$1,760
Levendale Hall Committee, for Installation of a Heat Pump - \$2,000	

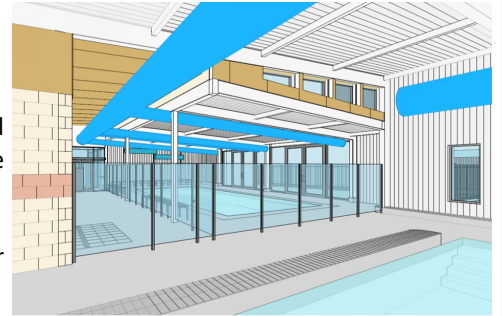
The Facilities & Recreation Committee of Southern Midlands Council received eleven applications identifying \$44,344.50 worth of projects to be undertaken in the Southern Midlands for the benefit of the Community, requesting a total of \$31,310.00 of support from Council through the SMC Community Small Grants Program 2021. Council had allocated \$30,000.00 in its 2020/2021 budget for the Program. From an historical perspective it is interesting to note that since the inception of the Southern Midlands Community Small Grants Program in 2007, Council have paid out to Community Groups through this Program a total of \$367,697.00, supporting \$1,202,286.00 worth of Community Projects.

It must be acknowledged that this Program and this Council has made a significant contribution to this Southern Midlands Community through the Program, a contribution that current and past Councillors should be rightly proud of.

For further information contact Andrew Benson [abenson@southernmidlands.tas.gov.au](mailto:abenson@southernmidlands.tas.gov.au)

## Oatlands Aquatic Centre

Construction of the Oatlands Aquatic Centre is well underway. The Practical Completion date is unchanged from the original date, being 4<sup>th</sup> March 2022 and there is an abundance of construction activity on site. Councillors conducted a site visit on Monday 11<sup>th</sup> October 2021, with Project Architect Peter Gaggin, Director of Philp Lighten Architects along with Acting Project Manager Vanessa Stanton. It was a timely site visit with Councillors being very impressed by the progress of the project. It is interesting to note that where the Councillors are standing in the photo is the same location in the architectural image below, albeit they are facing in the opposite direction, as the large Pool is behind them and the Toddlers Pool is alongside them in the photo.



We are all looking forward to March next year for the grand opening. – *Require further information contact Andrew Benson [abenson@southernmidlands.tas.gov.au](mailto:abenson@southernmidlands.tas.gov.au)*

PhilpLighten Architects OATLANDS AQUATIC CENTRE SMG

### Update on the New Planning Scheme for Southern Midlands

At the October 2021 Council meeting, the Planning Authority, considered the representations received on the recently exhibited draft Local Provisions Schedule. The Local Provisions Schedule will form a part of a new planning scheme for the Southern Midlands. This will be the *Tasmanian Planning Scheme – Southern Midlands* that will likely come into effect in the first quarter of 2022. A full report including the consideration of the representations is available on Council's website (Council Agenda Page).

The Local Provisions Schedule (LPS) is part of the Tasmanian Planning Scheme reform which was implemented through the amendment to the *Land Use Planning and Approvals Act 1993* (LUPAA) in late 2015. This is the legislation that effectively creates the planning system in Tasmania. The amendment created a legislated mechanism to implement this single state wide planning scheme. The draft Local Planning Provisions are the zone maps and overlays and a series of local planning provisions that are unique to the Southern Midlands such as the locally listed places of historic significance, special area plans and particular purpose zoning. Council completed the first draft of this documentation which was endorsed by Council at the November 2018 meeting. A series of hearings with the Tasmanian Planning Commission in 2019 led to a subsequent series of minor modifications to the documentation. These were necessary to refine the documentation to ensure compliance with the *Act* and to achieve a consistency with other Councils in the State. The Commission directed Council to undertake final modifications in late 2020 and persuaded Council to remove some strategic zone changes under this process. The Commission then reviewed the final draft LPS and directed Council to exhibit the draft Local Provisions Schedule in August 2021 for 60 days.

Council received 20 representations during this period. These representations were considered at the October Council Meeting whereby the Planning Authority endorsed a series of recommendations which largely stemmed from a workshop held on the 11<sup>th</sup> of October 2021.

The report is then provided to the Tasmanian Planning Commission to undertake the final review and conduct hearings on the matters addressed in the report and representations. The hearings will likely commence before the end of the year. All those persons and organisations that lodged a representation may attend the hearings and respond to any questions from the Commission and clarify any

matters required by the Planning Authority.

Council's Planning department can answer any further questions and can also provide useful guidelines and background information documentation upon request. A full copy of the draft Local Provisions Schedule and the State Planning Provisions are all available at <https://www.planning.tas.gov.au/>

## No Spray Register

The Southern Midlands council is responsible for the management of weeds and vegetation within its road reservations, which includes a



combination of mowing, manual removal and herbicide spraying. In rural and semi-rural areas, herbicide spraying is an integrated component of the Rural Verge Mowing Program.

Subject to conditions, local residents do have an option to be excluded from roadside herbicide spraying.

The 'No Spray Register' applies to property frontages of Council owned road reservations. A person may apply for inclusion on this Register, however property owners or residents must prepare a plan detailing how they will control the weeds and manage the vegetation.

For further information, please contact Council's Manager, Infrastructure & Works (David Richardson) on telephone 62 545000 or email: [mail@southernmidlands.tas.gov.au](mailto:mail@southernmidlands.tas.gov.au)



## Festival of Roses



**Sunday 21<sup>st</sup> November 2021**

**Cost Per person: \$15 + BYO Lunch**

**It is mandatory that masks be worn**

Woolmers Estate is a unique and fascinating reflection of colonial life in Tasmania and is one of the most historically significant heritage properties in Australia. Woolmers Estate Festival of Roses will be displaying thousands of roses in bloom, feature local makers and producers. Stalls range from art, craft and jewellery to art, plants, wine and food.

There will be a bus that will be picking up from three destinations

Bagdad Community Club- 8:00am

Kempton opposite St Mary's Church -8:15am

Oatlands Roche Hall car park (Campbell St) -8:45am

Arrive @ Woolmers- 10:15 am

- Please call or email to register and for further information.

Phone: 6254 5050

Email: [ccd@southernmidlands.tas.gov.au](mailto:ccd@southernmidlands.tas.gov.au)



## Southern Midlands Council Australia Day Awards

Nominations are now open for the Southern Midlands Council Australia Day Awards. These awards recognise the outstanding achievement and excellence of members of our local community.

Being nominated for an Australia Day Award is a great honour and is therefore a wonderful opportunity to pay tribute to someone who makes you proud to be an Australian.

All residents are invited to nominate a member of the community whose outstanding contribution is deserving of recognition. This could be a friend, family member, workmate or someone you have met while serving the community.

**Awards Categories:** Citizen of the Year, Young Citizen of the Year and Community Event of the Year.

**Nomination forms:** available from Council Offices or online at [www.southernmidlands.tas.gov.au/community-awards/](http://www.southernmidlands.tas.gov.au/community-awards/)

**Nominations close:** Monday, 30<sup>th</sup> November 2021 at 4.00 p.m.

**We're all part of the story.**  **Australia Day**  
Reflect. Respect. Celebrate.

## Black Summer Bushfire Recovery Grants

Black Summer Bushfire Recovery Grants – Broadmarsh & Elderslie Progress Association in partnership with Southern Midlands Council submitted a grant application for \$1.5 million for the refurbishment of the Broadmarsh Hall as an Emergency Recovery & Resilience Centre.



**National Recovery and Resilience Agency**

The \$280 million Black Summer Bushfire Recovery Grants program was established to help communities address priorities for recovery and resilience after the 2019-20 bushfires. This grants program comes from the National Bushfire Recovery Fund and is additional to support already provided through a range of bushfire recovery programs.

The Grants closed on the 6<sup>th</sup> October 2021 with both BEPA & SMC now waiting in eager anticipation for a letter from the Australian Government's National Recovery and Resilience Agency advising of our success. *Carpe Diem - Seize the Day.*

For further information Contact Andrew Benson [abenson@southernmidlands.tas.gov.au](mailto:abenson@southernmidlands.tas.gov.au) or Donna Blackwell (President BEPA) [BEPA@outlook.com.au](mailto:BEPA@outlook.com.au)

The Southern Midlands of Tasmania is where a blend of good old fashioned values and modern ideas co-exist. The Southern Midlands Council is a rural local government authority with approximately 3800 rateable properties and 6000 persons scattered throughout the districts.

Towns & localities include *Mangalore, Pontville, Bagdad, Broadmarsh, Elderslie, Dysart, Kempton, Melton Mowbray, Oatlands, Tunbridge, Tunnack, Parattah, Mt Seymour, Woodsdale, Levendale, Runnymede, Colebrook, Campania & Rekuna.*

## CONTACT US

**OATLANDS OFFICE 71 High Street, Oatlands 7120**  
General Managers Unit; Corporate Services, Infrastructure & Works,  
Natural Resource Management, Heritage Projects.

**Customer Service Opening Hours:**

Monday to Friday - 9.00 a.m. to 4.30 p.m.

**Phone:** 03 6254 5000 (Mon-Fri 8.30am - 5.00pm)

**Fax:** 03 6254 5014

**Email:** [mail@southernmidlands.tas.gov.au](mailto:mail@southernmidlands.tas.gov.au)

**Web:** [www.southernmidlands.tas.gov.au](http://www.southernmidlands.tas.gov.au)

**KEMPTON OFFICE 85 Main Street, Kempton 7030**

Development & Environmental Services and  
Community & Corporate Development

**Customer Service Opening Hours:**

Monday to Friday - 9.00 a.m. to 4.30 p.m.

**Phone:** 03 6254 5050

**Fax:** 03 6254 5014

**Email:** [mail@southernmidlands.tas.gov.au](mailto:mail@southernmidlands.tas.gov.au)

**Chauncy Vale Wildlife Sanctuary**

345 Chauncy Vale Road, Bagdad

**Phone:** 03 6254 5050

**Web:** [www.chauncyvale.com](http://www.chauncyvale.com)

**Email:** [mail@southernmidlands.tas.gov.au](mailto:mail@southernmidlands.tas.gov.au)

**Service Tasmania** 71 High Street, Oatlands

Monday to Friday **11.00 a.m. - 4.00 p.m.**

Phone 1300 13 55 13

## WASTE TRANSFER STATION OPENING HOURS

### OATLANDS

#### WASTE TRANSFER STATION

Inglewood Road, Andover  
(Via Tunnack Main Road, Oatlands )

Tuesday 8.00 am - 12.00 noon

Friday 11.00 am - 3.00 pm

Saturday 8.00 am - 12.00 noon

Sunday 1.00 pm - 5.00 pm

### CAMPANIA

#### WASTE TRANSFER STATION

Brown Mountain Road, Campania

Tuesday 1.00 pm - 5.00 pm

Thursday 1.00 pm - 5.00 pm

Saturday 1.00 pm - 5.00 pm

Sunday 8.00 am - 12.00 pm

### DYSART

#### WASTE TRANSFER STATION

Huntingdon Tier Road, Dysart

Tuesday 1.00 pm - 5.00pm

Saturday 1.00 pm - 5.00pm

Sunday 1.00 pm - 5.00pm

## COMMUNITY NOTICE BOARD

To place items on the Community Notice Board,  
contact IT Officer Nick Wilson or email  
[webmaster@southernmidlands.tas.gov.au](mailto:webmaster@southernmidlands.tas.gov.au)

## COUNCILLORS

Mayor & Councillor enquiries can be directed to  
Jemma Crosswell (Executive Assistant) - 6254 5004  
or via contact details below

<b>Mayor Alex Green</b>	0429 604 153	<a href="mailto:agreen@southernmidlands.tas.gov.au">agreen@southernmidlands.tas.gov.au</a>
<b>Deputy Mayor Edwin Batt</b>	0400 009 471	<a href="mailto:ebatt@southernmidlands.tas.gov.au">ebatt@southernmidlands.tas.gov.au</a>
<b>Clr Tony Bantick</b>	0419 340 157	<a href="mailto:abantick@southernmidlands.tas.gov.au">abantick@southernmidlands.tas.gov.au</a>
<b>Clr Tony Bisdee OAM</b>	0418 355 158	<a href="mailto:abisdee@southernmidlands.tas.gov.au">abisdee@southernmidlands.tas.gov.au</a>
<b>Clr Karen Dudgeon</b>	0428 361 807	<a href="mailto:kdudgeon@southernmidlands.tas.gov.au">kdudgeon@southernmidlands.tas.gov.au</a>
<b>Clr Don Fish</b>	6255 5157	<a href="mailto:mail@southernmidlands.tas.gov.au">mail@southernmidlands.tas.gov.au</a>
<b>Clr Rowena McDougall</b>	0466 816 882	<a href="mailto:rmcdougall@southernmidlands.tas.gov.au">rmcdougall@southernmidlands.tas.gov.au</a>

## AFTER HOURS

Council emergencies  
please phone

**0419 325 405**

For all after hours  
**Water & Sewerage TasWater**  
**emergencies**  
please phone **136 992**

For all after hours  
**Tasmanian Gas Pipeline**  
**emergencies**  
please phone **1800 195 666**

For all road issues relating to  
the **Midland Highway,**  
**Mudwalls Road or Tunnack**  
**Main Road** please phone  
Dept. of State Growth  
on **1300 139 933**