



Newsletter

Issue 2 | March 2018



MAYORS REPORT

It is again my pleasure to provide a very positive and exciting update regarding recent announcements for the Southern Midlands Council area.

Whilst this report will be received by you after the State Election, it is advised that during the election campaign we were successful in securing a commitment of \$2.5

million from both the Liberal and Labor parties to upgrade the Acute Care section of the Midlands Multi-Purpose Health Centre (MMPHC) at Oatlands. The Chairman of the MMPHC Community Advisory Committee, Mr Athol Bennett, and myself lobbied both political parties to secure the funding for this much needed and overdue upgrade. Both parties have agreed to complete the upgrade works within twelve months.

In addition to the above, both political parties have committed to providing \$75,000 as a contribution to the establishment of a small-scale Community Health Facility at Kempton.

In recent months, Council has been working with the local community to identify a potential facility that could be upgraded / converted for use as a community medical facility. This led to discussions with the Kempton Primary School (i.e. Education Department) who has given consent to enter into a lease arrangement for the existing 'School House'. This building was previously referred to as the Principal's residence and use is now limited to accommodating special needs students on an occasional basis. The building, subject to modifications, is capable of joint use. This project has a total cost of \$200,000 with Council committing a direct financial contribution of \$25,000 with the balance of funds being secured through a loan which will be financed from future operations.

Both of these announcements are particularly pleasing as it ensures that our excellent standard of health care currently provided within the Southern Midlands is maintained and enhanced.

Oatlands Aquatic Centre—Update

In response to the required public notification of the Aquatic Centre Development Application under the Southern Midlands Interim Planning Scheme 2015, six representations were received from members of the community.

Whilst the representations were considered and discussed by Council, acting as the Planning Authority, the Development Application for the proposed Aquatic Centre was approved subject to conditions at its meeting held in

December 2017.

Development approval has been a significant step forward, with the intent then being, able to prepare final design documentation which would enable Council to proceed to building approval and then on to the calling of tenders for construction.

Following the decision to approve the Development Application by the Planning Authority, an appeal was lodged by some of the representors, with the Resource Management and Planning Appeal Tribunal.

The Planning Appeal process through the Resource Management Planning Appeals Tribunal involves the conducting of an initial Directions Hearing to determine and confirm the grounds of appeal, followed by a mediation process (if necessary). If the mediation fails to resolve the matter the Appeal then goes to a full hearing of the Planning Appeals Tribunal, where the Tribunal makes a decision after hearing the evidence from both parties, along with expert witnesses supporting each parties legal team.

Unfortunately this process, which involves additional cost to Council, does take time and will result in an unknown delay in the timeframe to call tenders for construction, or indeed could result in the project being refused by the Planning Appeals Tribunal. In cases such as this, the majority of appeals are resolved between the parties at the mediation stage.

The application is now at the mediation stage, which involves mediation between the appellant (of which there are five individuals) and Council. We are hopeful of a positive outcome from this process.

The Southern Midlands Council continues to strive to provide the very best community facilities for the greater benefit of our ratepayers and residents.

Australia Day Awards

Congratulations to our very worthy Australia Day Award recipients who make such a positive contribution to the Southern Midlands. The Awards were presented at the Oatlands RSL Club by the Mayor on the 26th January 2018.

Citizen of the Year: **Mrs Karen Dudgeon**

Young Citizen of the Year: **Miss Rebekah Iles**

Community Event of the Year: **Oatlands Golf Club 'B Grade Championships'**

Clr Tony Bisdee OAM
MAYOR



soba @ Callington

Held Sunday, 25th February 2018

What a spectacular day for Oatlands! The day dawned fair and bright, the sun shining on our visitors to the event with just a hint of a breeze early in the morning. With crowd numbers hovering around 1,500, the day was a wonderful mix of cuisine, cultural and colonial experiences which drew people from afar and in large numbers from our local community.

We were delighted to have our Mayor, Tony Bisdee O.A.M welcome a consul from the Japanese Consulate in Melbourne, Mr Tojo Toshiki and to hear from event visionary Mr Rick Shiratori of Shiratori Flour Mills in Japan as he spoke to the crowd of his joy at bringing the dedicated soba artisans from Japan. The precinct of the mill resounded to the beat of Taiko drummers and the sweet tones of Japanese opera singer Ms Mayuki, whilst visitors avidly viewed the soba noodle making demonstrations, dressed in kimonos, enjoyed the tea making ceremonies and learnt new skills in the art of origami and calligraphy. Plus a late afternoon addition to the entertainment by a visiting Japanese performer who delighted the crowd.

Our Blacksmiths forge had a steady stream of interested onlookers, many viewed the buckwheat growing in

the mill garden and the Mill Shop and Mill Tours saw a steady stream of people interested in the mill and purchasing flour products.

The soba tasting lines were busy and over 600 samples were served in such a small period, students from Oatlands District High School and the Colebrook Youth Group were kept busy along with other volunteers on serving and clearing duties. This was enormously popular and there were some additional tickets made available on the day.

Rotary Oatlands and our Swim Club were fast and furiously producing tasty food in the food park area, where people enjoyed their picnic lunch under the trees. High Street buzzed with people and the cafes, shops and heritage sites such as the gaol and history museum were popular spots for visitors wishing to more widely experience what Oatlands has to offer. The day was all made possible by our Japanese visitors, their affiliated members of the Australian – Japan Society of Tasmania and the tireless work of the community volunteers.



CHANGE OF DATE — April 2018 Council Meeting

Please be advised that the April Council meeting date has been changed to **Tuesday, 24th April 2018**. The meeting will commence at 10.00 a.m at the Bagdad Community Club with Public Question Time held at 12.30 p.m.

2018 MOOD FOOD KEMPTON FESTIVAL Big Day Out was at Kempton on Sunday, 18 February and was a great success!

Concentrating activities, entertainment and stalls onto the main arena was a winner creating a carnival atmosphere as patrons gathered to watch the ever-popular sheep racing, wood chopping and Flyball Dogs and listen to the steady stream of music. Music from the main stage was provided by popular local band "Sundown", the Bagdad Community Singers, International Australian performers Justine Standley, John O'Dea, Kylie Adams-Collier and Vanessa Bourne and Kempton residents Dot and Roy Newman. Edwin (The Grey Nomads) was situated near the main entrance

In the adjoining paddock, reminders of a by-gone era were on display in the Horse Drawn Heritage building and the dedicated group of riders demonstrated the skills required to be a Light Horseman.

Time-honoured Sheaf Tossing and Move-A-Mitsubishi again proved popular.

Children were well catered for with Tas Laser Skirmish, PCYC, Bump Balls, Face Painting and Art Competition.

Shearing demonstrations and wool display complimented the focus on the Tasmanian Sheep Racing Championship - won by Baarnett. Sweeps on sheep races enabled patrons, who had not sponsored a sheep, an opportunity to become involved by investing in each heat and the final.

Food and beverage on site included whisky from local distilleries. In addition to the usual array of stalls on the site patrons were able to visit Dysart House, RSL/Memorial Hall and The Huntington Tavern.

Congratulations, and thank you, to all the dedicated members of the Kempton Festival Committee, volunteers and helpers without whose support and hard work the Festival could not function.

Thanks also to the major sponsor, Mr Troy Bennett of the Mood Food at Kempton. The Kempton Festival is conducted under the auspices of the Green Ponds Progress Association. Funds from this year's Festival will be added to the GPPA project to purchase a community bus for Kempton.





Award for Long-Term Ambulance Service VOLUNTEER PAUL WILSON

Congratulations to Paul Wilson who has received further recognition for approximately 40 years-service with the Oatlands Ambulance / Tasmanian Ambulance Service.

The Australian Institute of Emergency Services (AIES), through its National Award Scheme, recognises outstanding and significant contributions that individuals make as members of an emergency service or affiliated organisation in the fields of Leadership, Management, Operations, Training, Support and Innovation.

At a presentation ceremony held at the Claremont RSL on Saturday 24th February 2018, Paul was awarded the National Certificate of Commendation issued by the AIES. Mr Ron Jones, President of the Tasmanian Division, presented Paul with his Award. The Award is sponsored by the RSL (Tasmania) and is aimed at recognising Tasmanian Emergency Services personnel.

PROTECTING LAKE DULVERTON FROM THE THREAT OF CUMBUNGI



Hard to spot - Cumbungi highlight-

Cumbungi or Bullrush (*Typha latifolia*) is an introduced weed that can invade lakes, waterways and wetlands throughout Tasmania, mainland states and overseas. It prefers slow moving water up to two meters deep with high nutrient levels and lack of shade. The dense stands and rapid growth of cumbungi make it one of the most troublesome of the invasive aquatic weeds, causing restricted water flow and siltation. Decaying top growth can lead to anaerobic (no oxygen) conditions which foul the water and reduce water quality impacting the general aquatic habitat, including invertebrates and fish. Once established in an area it begins to produce rhizomes (running roots) which may extend the plant to a diameter of 3 metres in its first year!

In December last year, the Landcare Office staff responded to public reports of cumbungi along Lake Dulverton foreshore. The reported areas were surveyed and all seed heads removed prior to spraying the weeds with a water safe herbicide. We then surveyed the entire lake early this year and found over 50 additional

infestations ranging from seedlings to mature plants. All of these areas have now been treated.

The question remained – where does the seed come from to infest Lake Dulverton? Most new colonies arise from the germination of seed carried by the wind or in mud on the feet of birds, livestock or people, or on agricultural implements.

So, the search began to find cumbungi within about two kilometers of the Lake. Council works staff reported cumbungi along sections of the Midland Highway near Oatlands and another staff member saw plants on a couple of nearby dams. Landcare staff then removed all seed heads at the five sites along the Midland Highway and also on the two dams, where we are working cooperatively with the landholder. Another proactive landholder with dams within two kilometers of the lake has also removed seed heads and sprayed plants.

If you have a dam or wet area with cumbungi on your property and are within 2 km of the Lake, please be proactive and at least prevent seeding this year by cutting off, bagging and safely disposing of the seed heads. To assist us in preventing cumbungi taking over the lake, please report any Cumbungi plants seen in Lake Dulverton or in nearby dams to the Landcare Office on 6254 5048 or e-mail sleighton@southernmidlands.tas.gov.au



Cumbungi

NEW STORAGE FACILITY AT MANGALORE RECREATION GROUND

A combined effort between Southern Midlands Council, Brighton & Southern Midlands Pony Club, Brighton Equestrian Club (Adult Riders) and Tasshep (dog club) has seen the completion of a secure storage facility at Mangalore Recreation Ground in Blackbrush Road. Mayor Tony Bisdee OAM congratulated the Clubs at a celebration BBQ held on Saturday, 17 February 2018.

Funding was obtained through 2 grants, a Minor Grant from the State Government for Community Infrastructure and a small grant from the Southern Midlands Council. The Project Manager Christine Knight and District Commissioner of Pony Club Kareena Blackwell would like to thank everyone who contributed including several local businesses and Southern Midlands Council who generously donated services and time for this worthwhile project.

Custom Engineering (Simon and Jackie Hobden); Tas Tech Building Supplies (Charlie Beadman); Beamish Excavations (Jason and Tracey Beamish); Tas Trans (Tony Berry); MLM Property Constructions Pty Ltd (Craig Knight); Leon McGuinness (Building Surveyor); Longview Design & Drafting (Phil Krause).

These 3 Clubs meet regularly on the grounds to spend quality time with their ponies, horses and dogs and welcome new members year round. **The Brighton Equestrian Club is holding a Working Equitation Day at Pontville on Sunday 18th March which is open to all ages.** To register please email lacey.fam@bigpond.com.

If you would like more information about these Clubs you can make contact with them via the details provided below:-

Brighton & Southern Midlands Pony Club contact Kareena Blackwell on 0402 763 135 or jaebesa@bigpond.com

Brighton Equestrian Club contact Lauren Hazelwood on 0422 080 647 or lozhazelwood@me.com

Tasshep (dogs) contact Mike England on 0401 162 762 or tasshep@bigpond.com

For the latest Council news visit:

www.southernmidlands.tas.gov.au or like us on facebook



WEED BIOLOGICAL CONTROL AGENTS ACTIVE IN SOUTHERN MIDLANDS

Council's Weeds Officer recently joined Dr John Ireson, Honorary Research Scientist (Biological Control of Weeds) and Technical Officer Richard Holloway on a field trip to weed biological control nursery sites in the Southern Midlands. Whilst working for the Tasmanian Institute of Agriculture John & Richard released agents for many weeds including gorse, broom, Paterson's curse and cotton thistle.

Gorse: There are now four agents exerting biological control on gorse in Tasmania. The gorse weevil *Exapion ulicis* is widespread and attacks summer seed and has been present in the state since the 1900s. The gorse spider mite *Tetranychus lintearius* was released in 1998 and is now widespread across the state. The gorse thrip *Sericothrips staphylinus* was released in 2001. The gorse soft shoot moth *Agonopterix umbellana* was released in 2007. It is now well established and spreading at several sites in the municipality including near Melton Mowbray and Lake Tiberias. The gorse weevil and the gorse soft shoot moth are showing considerable promise for the future by reducing the amount of seed produced and plant growth.



Gorse weevil adult

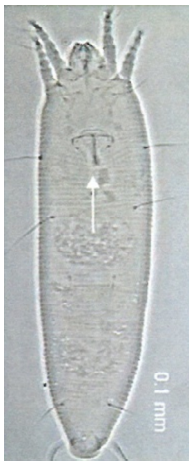


Gorse soft shoot moth – adult & larva



Gorse soft shoot moth larva

English broom: The broom gall mite *Aceria genistae* was released in 2004 and is now well established around Lake Dulverton. It has since spread to adjoining areas including along Tunnack road to Parattah township. The mite forms characteristic galls (see below photo on right) that indicate the mite is active on a plant. Unlike a lot of biocontrol agents, the broom gall mite can kill English broom. Take a closer look at the English broom next time you are on the Lake Dulverton walking track where the mites are very active.



Broom gall mites



English broom killed by the broom gall mite at Lake Dulverton



'galls' on infested stem

The future looks promising for biocontrol agents to continue to spread from existing nursery sites and reduce the impact of both English broom and gorse in the Southern Midlands. In order to speed up this process, we have collected the gorse soft shoot moth and released it at two new sites near Oatlands and Lemont in February 2018.

Become involved:

If you have a suitable English broom site, please contact Sandy Leighton (Weeds Officer) to discuss a release on your property

sleighton@southernmidlands.tas.gov.au or 6254 5048.

IMPORTANT ADVICE – WASTE TRANSFER STATION OPENING HOURS

Please note that from the **1st MARCH 2018**, the Opening Hours for the Waste Transfer Stations will change

OATLANDS WASTE TRANSFER STATION

will CHANGE its opening hours and be as follows:

Tuesday	8.00 a.m. to 12.00 noon
Friday	11.00 a.m. to 3.00 p.m.
Saturday	8.00 a.m. to 12.00 noon
Sunday	1.00 p.m. to 5.00 p.m.

DYSART WASTE TRANSFER STATION

will CHANGE its opening hours and be as follows:

Tuesday	1.00 p.m. to 5.00 p.m.
Saturday	1.00 p.m. to 5.00 p.m.
Sunday	1.00 p.m. to 5.00 p.m.

CAMPANIA WASTE TRANSFER STATION

will CHANGE its opening hours and be as follows:

Tuesday	1.00 p.m. to 5.00 p.m.
Thursday	1.00 p.m. to 5.00 p.m.
Saturday	1.00 p.m. to 5.00 p.m.
Sunday	8.00 a.m. to 12.00 noon

Effective from the 1st March 2018, all users will be required to show their Driver's Licence as evidence that they live within the municipal area. Alternatively, users will need to have some form of evidence that they are a property owner.

All non-ratepayers and non-residents will be strictly required to pay disposal fees in accordance with the Schedule of Charges displayed.

Ratepayers and residents will still be required to pay the scheduled fee for disposal of Tyres; Whitegoods and Car bodies.

Please note that the disposal of Car Bodies is only available at Oatlands Waste Transfer Station and are not accepted at Dysart & Campania Waste Transfer Stations.

BUILDING LAWS (TASMANIA)

The Building Act 2016 takes a risk-based approach to building approvals. Visit www.justice.tas.gov.au/building/publications and find out more details about what you can and can't build in the Directors Determination of Building and Demolition Work

FREQUENTLY ASKED QUESTIONS:

Do I need a Permit to live in a Shed?

Yes— Under the Building Act 2016 and the Building Regulations 2016 you need approval to change the use and classification of a building and the building work.

Do I need a permit to build an annexe?

Under the Building Act you do not need a building permit to build an annex up to a maximum size of 18m² and provided it meets the standard limitations listed:

Standard Limitations:

- Associated with the occupation of a registrable motor vehicle
- Maximum size building work 18m²
- Maximum ridge height 4.5m²
- Maximum wall height 3.m
- Stormwater management
- cut or fill
- fire separation
- payment of statutory fees or levies

Do I need a Permit for a Shipping Container on my land?

Under the Building Act 2016 you do not need a building permit to place a shipping container (provided it meets the standard limitations) on your land.

Limitations, Maximum dimensions etc. (if any)

- Non habitable structure
- One container high not stacked
- Placed in ground level or on a base or pad so can be tied down;
- pad is to be no more than 300mm high
- Cut and fill
- Protection Work
- Fire separation
- Stormwater management
- Work in Bushfire Prone areas
- Work in land slip areas
- Work over or near an easement or affecting infrastructure

YOUR RESPONSIBILITIES:

- Please contact the building department or a Building Surveyor for further information. Your safety is important to us!
- If the structures of sizes are greater than permitted for that Category you will need to engage a Building Surveyor who will issue a certificate of likely compliance – Notifiable Work
- Contact Councils Planning Department to confirm that a Planning Permit is not required under the Southern Midlands Interim Planning Scheme 2015. Councils Planning Officer can be contacted on 62593011.
- You are required to notify Council that the work has been carried out, so that Council have a record of the erection of the structure. There is an approved Form 80—Notification of Low Risk Work. Forms are available on Councils website or contact the Council Office and a form can be obtained.
- The container cannot not be used to live in.
- If you want to live in a container/house by law it is your responsibility to engage a Building Surveyor to arrange a permit and seek approval. Your safety is important to us!
- Contact Councils Planning Department to confirm that a Planning Permit is not required under the Southern Midlands Interim Planning Scheme 2015.
- Ensure that any proposed work conforms with the scope of the Directors Determination Department of Justice description and limitation, in particular that the permitted size limits are not exceeded and that the boundary set backs are complied with.

Welcome to the Southern Midlands of Tasmania, where a blend of good old fashioned values and modern ideas co-exist. The Southern Midlands Council is a rural local government authority with approximately 3400 rateable properties and 6000 persons scattered throughout the districts.

Towns and localities include Mangalore, Bagdad, Broadmarsh, Elderslie, Dysart, Kempton, Melton Mowbray, Oatlands, Tunbridge, Tunnack, Parattah, Woodsdale, Levendale, Runnymede, Colebrook, Campania and Rekuna.

Contact Us!

Oatlands Office 71 High Street, Oatlands Tas 7120

Corporate Services, Works and Technical Services, Natural Resource Management, Heritage Resources and Management, Information Technology

Customers Service Opening Hours (Mon - Fri 9.00am - 4.30pm)

Phone 03 6254 5000 (Mon - Fri 8.30am - 5.20pm)

Fax 03 6254 5014

mail@southernmidlands.tas.gov.au

Kempton Office 85 Main Street, Kempton Tas 7030

Development and Environmental Services, Community and Corporate Development

Customers Service Opening Hours (Mon - Fri 9.00am - 4.30pm)

Phone 03 6259 3011 (Mon - Fri 8.30am - 5.20pm)

Fax 03 6259 1327

mail@southernmidlands.tas.gov.au

Oatlands Swimming Pool 2017/18

Opening Hours:

During School Terms (Mon-Fri) 3.00 p.m. – 6.00 p.m.

During School Holidays 11.00 a.m. – 6.00 p.m.

Weekends 11.00 a.m. – 6.00 p.m.

Public Holidays 11.00 a.m. – 6.00 p.m.

Chauncy Wildlife Sanctuary

345 Chauncy Vale Road Bagdad

Phone 03 6259 3011

mail@southernmidlands.tas.gov.au

Councillors

Mayor and Councillor enquiries can be directed to:

Elisa Lang - Executive Assistant - 6254 5004

mail@southernmidlands.tas.gov.au

Mayor Tony Bisdee OAM 0418 355158

Deputy Mayor Alex Green 0429 604153

Councillor Tony Bantick 0419 340157

Councillor Edwin Batt 0400 009471

Councillor Robert (Bob) Campbell 0404 260 026

Councillor Donald Fish 6255 5157

Councillor David Marshall 6260 4300

Or visit www.southernmidlands.tas.gov.au
for further contact details.

2017/18 FEES & CHARGES	
Season Ticket:	
Family	\$110.00
Adult	\$55.00
Child/Student	\$42.00
Daily Tickets:	
Family	\$12.00
Adult	\$5.00
Child/Student	\$4.00
Complex Hire Fee:	
For out of hour bookings phone 6254 5000	

For all Council after hours emergencies, please phone 0419 325 405

For all after hours Water & Sewerage emergencies, please phone 13 6992

For all after hours Tasmanian Gas Pipeline emergencies, please phone 1800 195 666 Gen Enq 1300 241 820

For all road issues relating to the Midland Highway, Mudwalls Road or Tunnack Main Road should be directed to State Growth on **1300 139 933**

COMMUNITY NOTICE BOARD

For Information in relation to placing items on the Community Notice Board, please contact Councils IT Officer

Nick Wilson at the Oatlands Office or Email webmaster@southernmidlands.tas.gov.au

*** New Hours effective 1 March 2018**

Waste Transfer Station Hours

OATLANDS WASTE TRANSFER STATION

Inglewood Road, Andover, Tasmania
(Via Tunnack Main Road Oatlands to Parattah)

- Tuesday 8.00 am - 12.00 noon *
- Friday 11.00 am - 3.00 pm
- Saturday 8.00 am - 12.00 noon
- Sunday 1.00 pm - 5.00 pm

CAMPANIA WASTE TRANSFER STATION


Brown Mountain Road, Campania, Tasmania

- Tuesday 1.00 pm - 5.00pm
- Thursday 1.00 pm - 5.00pm
- Saturday 1.00 pm - 5.00 pm *
- Sunday 8.00 am - 12.00 noon *

DYSART WASTE TRANSFER STATION

Huntingdon Tier Road, Dysart, Tasmania

- Tuesday 1.00 pm - 5.00pm
- Saturday 1.00 pm - 5.00pm *
- Sunday 1.00 pm - 5.00pm *



Tasmanian Government

Service Tasmania
Oatlands
71 High Street
Oatlands Tas 7120
Opening Hours
Monday to Friday
11.00am—4.00pm